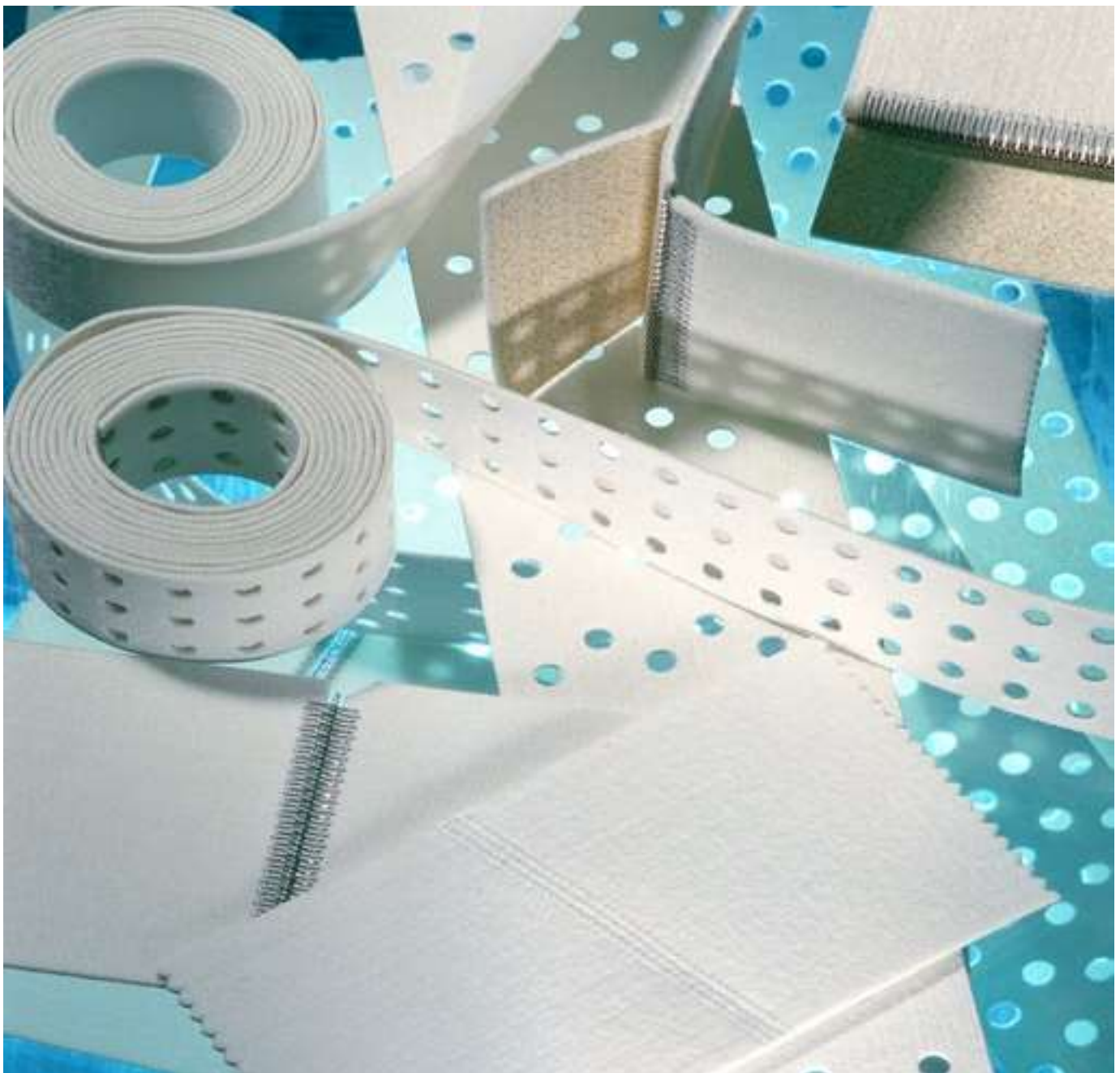


2.1. FEED BELTS

Special compact 100% Polyester needled felt of 1000g/m². Special finishing and heat setting. One hard side for better grip. Both edges are melted to avoid any threads hanging.

Key point: This special feed belt is the original equipment of most of the machines such as: Electrolux, Jensen, Girbau, Chicago Dryer, Danube, Alliance/Ipso/Primus, Image, Kaan, Vyasma Plant, GMP, Imesa, etc.



2.1. FEED BELTS

77/100.09.TC1M

#1



FEED BELT for feeder

Special compact 100% Polyester needled felt of 1000 g/m².
Special finishing and heat setting. One hard side for better grip.
Both edges are melted to avoid any threads hanging.

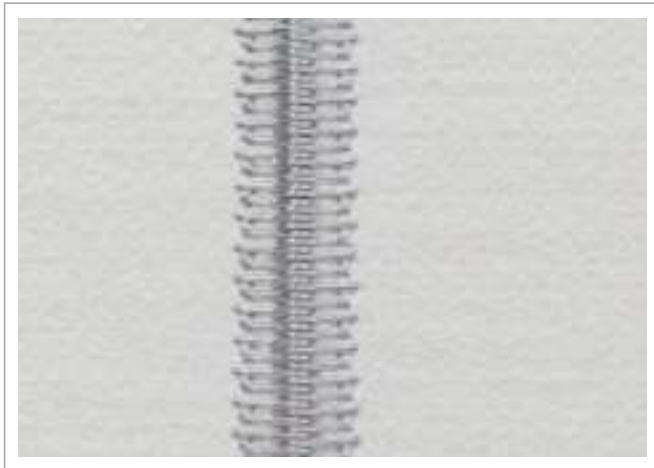
Thickness: 2,8 mm

Available in any desired width
Supplied in rolls of ± 50 m
Also excellent for belts for folders and stackers

Readymade belts
Endless with oblique reinforced seam

77/100.09.TC1M

#2



FEED BELT for feeder

Special compact 100% Polyester needled felt of 1000 g/m².
Special finishing and heat setting. One hard side for better grip.
Both edges are melted to avoid any threads hanging.

Thickness: 2,8 mm

Readymade belts in any desired width
Supplied in rolls of ± 50 m
Also excellent for belts for folders and stackers

With stainless steel hooks

77/2.100.1.TC1M

#3



FEED BELT for feeder

Special compact 100% Polyester needled felt of 1000 g/m².
Special finishing and heat setting. One hard side for better grip.
Both edges are melted to avoid any threads hanging.

Thickness: calendared to be 2,0 mm

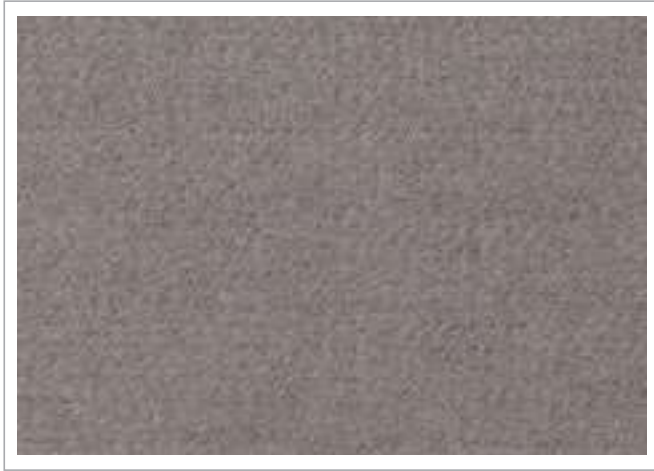
Available in any desired width
Supplied in rolls of ± 50 m
Also excellent for belts for folders and stackers

Readymade belts
Endless with oblique reinforced seam
With stainless steel hooks

2.1. FEED BELTS

77/2.100.1.TC1M.CI

#5



FEED BELT for feeder

Special compact 100% Polyester needled felt of 1000 g/m².
Special finishing and heat setting. One hard side for better grip.
Both edges are melted to avoid any threads hanging.

Thickness: calendered to be 2,0 mm

HIGH VISUAL RESISTANCE TO GRIME!

Available in any desired width
Supplied in rolls of ± 50 m
Also excellent for belts for folders and stackers
Readymade belts
Endless with oblique reinforced seam
With stainless steel hooks
Colour can vary between different productions!

77/20.135.B1.3.TC1M.SC

#7



SUPER ADHERENT FEED BELT — 1350g/m²

Synthetic needled felt of 1350 g/m², with SILICONIZED SIDE for extreme grip.

Thickness: 2,0 mm

Available in any desired width
Supplied in rolls of ± 50 m
Also excellent for belts for folders and stackers

77/25.150.2.TC1M.SC

#9



SUPER ADHERENT FEED BELT — 1500g/m²

Synthetic needled felt of 1500 g/m², with SILICONIZED SIDE for extreme grip.

Heavier — more stability
Thicker — no reinforcement needed under the hooks
Thicker — more straight (less curving) over the width

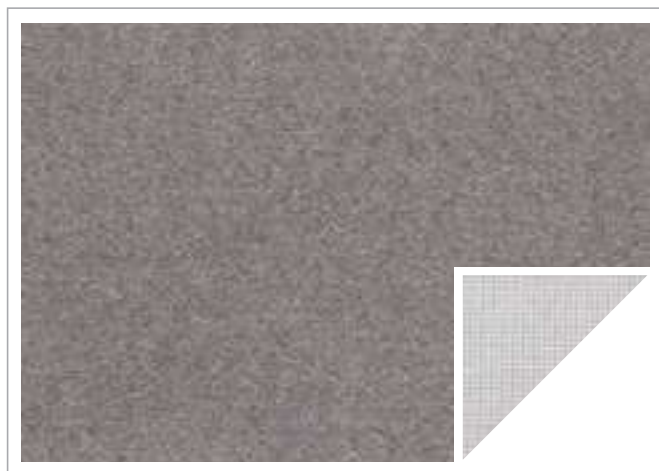
Thickness: 2,5 mm

Available in any desired width
Supplied in rolls of ± 50 m
Also excellent for belts for folders and stackers

2.1. FEED BELTS

77F/112.1.CI

#11



GREY FEED BELT

Synthetic belt of light grey colour on top and white colour on the bottom for Kannegiesser.

Standard widths: 48 mm & 112 mm

Supplied in rolls of \pm 50 m

NOTE: Please consult us for readymade belts

7F/112.1.BE

#12



BEIGE FEED BELT

Synthetic belt of beige colour on both sides and small grey line on top side for Kannegiesser.

Standard widths: 48 mm & 112 mm

Supplied in rolls of \pm 50 m

NOTE: Please consult us for readymade belts.

2.2. PERFORATED BELTS

77/2.100.1.TC1M

#4



PERFORATED BELT for vacuum feeder

Special compact 100% Polyester needled felt of 1000 g/m². Special finishing and heat setting. One hard side for better grip. Both edges are melted to avoid any threads hanging.

Thickness: Calendared to be 2.0 mm

Supplied in rolls of ± 50 m x desired width

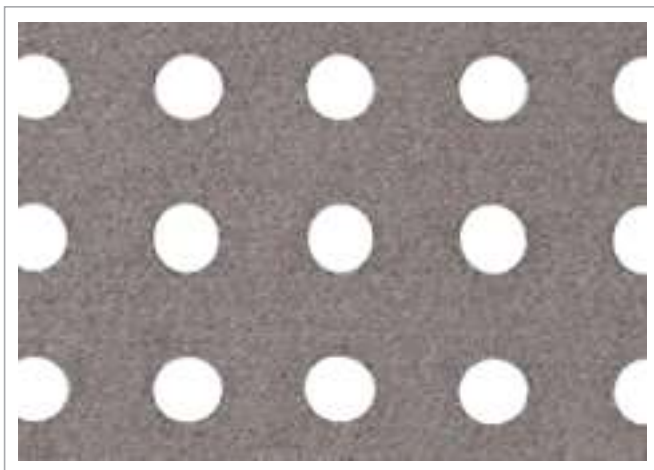
Typical hole pattern/belt width:

- Jensen — 48 mm
- Biko — 50 mm
- Weir — 75 mm
- Amko (& Olma, Biko, Vega System) — 88 mm & 180 mm
- Lapauw — 95 mm
- Kannegiesser — 112 ± 1 mm

NOTE: Please consult us for other patterns/widths and ready-made belts.

77/2.100.1.TC1M.CI

#6



GREY PERFORATED BELT for vacuum feeder

Special compact 100% Polyester needled felt of 1000 g/m². Special finishing and heat setting. One hard side for better grip. Both edges are melted to avoid any threads hanging.

HIGH VISUAL RESISTANCE TO GRIME!

Colours can vary between different productions!

Thickness: Calendared to be 2.0 mm

Supplied in rolls of ± 50 m x desired width

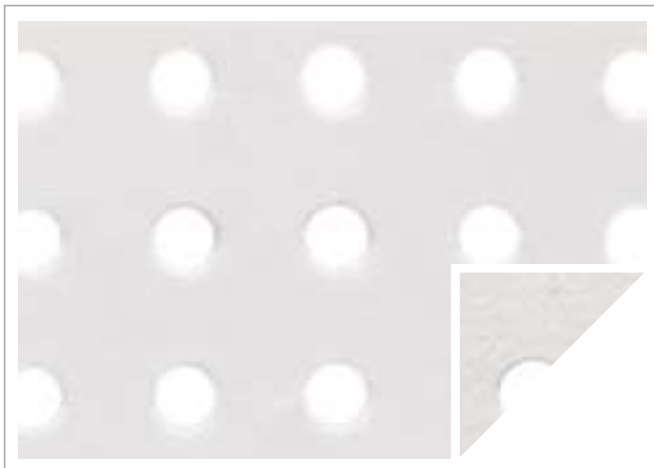
Typical hole pattern/belt width:

- Jensen — 48 mm
- Biko — 50 mm
- Weir — 75 mm
- Amko (& etc.) — 88 mm & 180 mm
- Lapauw — 95 mm
- Kannegiesser — 112 ± 1 mm

NOTE: Please consult us for other patterns/widths and ready-made belts.

77/20.135.B1.3.TC1M.SC

#8



SUPER ADHERENT PERFORATED BELT

Synthetic needled felt with SILICONIZED SIDE for extreme grip. For Vacuum feeders.

Thickness: 2.0 mm

Supplied in rolls of ± 50 m x desired width

Typical hole pattern/belt width:

- Jensen — 48 mm
- Weir — 75 mm
- Amko (& etc.) — 88 mm
- Lapauw — 95 mm
- Kannegiesser — 112 mm

NOTE: Also excellent for belts for folders and stackers.

77/25.150.2.TC1M.SC

#10



SUPER ADHERENT PERFORATED BELT

Synthetic neededled felt with SILICONIZED SIDE for extreme grip.
For Vacuum feeders.

Heavier — more stability
Thicker — no reinforcement needed under the hooks
Thicker — more straight (less curving) over the width

Thickness: 2.5 mm

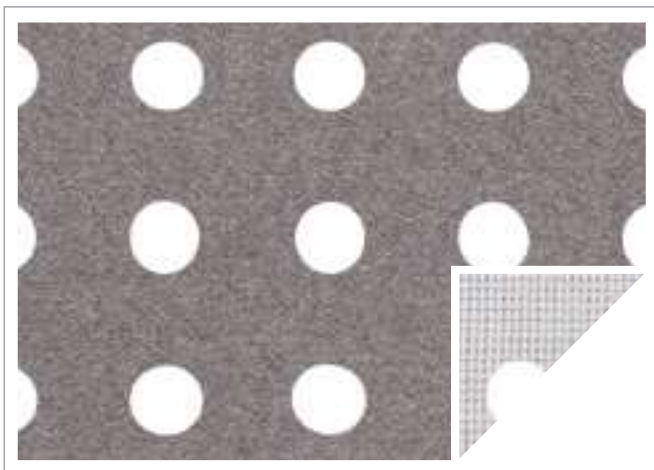
Supplied in rolls of ± 50 m x desired width

- Jensen — 48 mm
- Weir — 75 mm
- Amko (& etc.) — 88 mm
- Lapauw — 95 mm
- Kannegiesser — 112 mm

NOTE: Also excellent for belts for folders and stackers.

77F/112.1.CI

#11



PERFORATED GREY FEED BELT

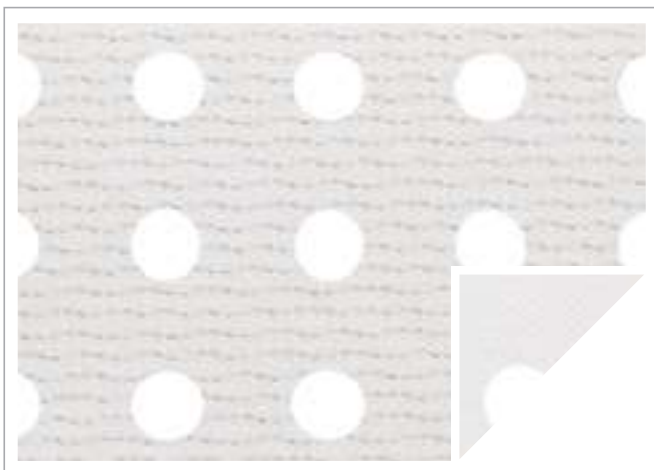
Synthetic belt of light grey colour on top and white colour on the bottom with typical hole patterns, such as Kannegiesser, etc.

Supplied as readymade belts only.

Please provide us with dimensions and/or spare part number.

7F/112.1.BE

#12



PERFORATED BEIGE FEED BELT

Synthetic belt of beige colour on both sides and small grey line on top side, with typical hole patterns, such as Kannegiesser, etc.

Supplied as readymade belts only.

Please provide us with dimensions and/or spare part number.